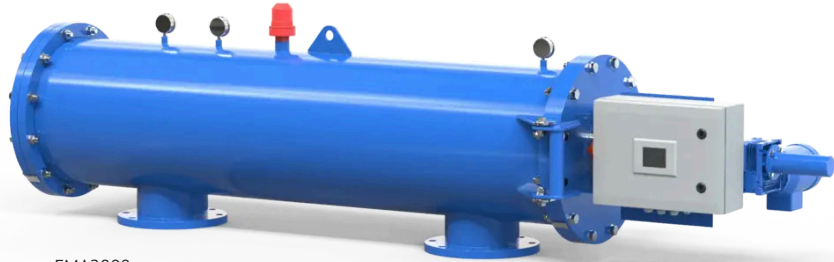




[-> to the product](#)

The FMA 2000 self-cleaning automatic filter is designed specially for your filtration needs. Such as drinking water, desalination, food industry, chemical industry, cooling towers, field irrigation, golf courses, and physical barriers against zebra mussels.



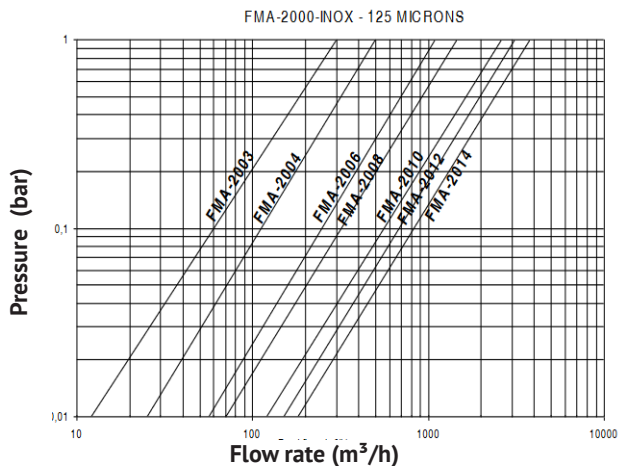
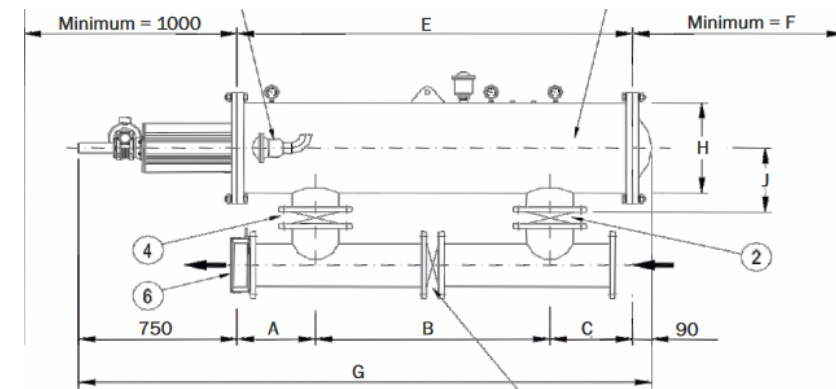
FMA2008

- Micron rating from 10-1000 µm
- Cleaning via suction nozzle unit
- Minimal water consumption during cleaning. Less than 0.1% of total flow per cleaning operation
- Large filter area up to 19.150 cm²
- Engage of cleaning process by differential pressure and/or by time
- Low power consumption
- No interruption of water supply for downstream equipment
- Electronically monitored cleaning with flexible control options

Note: The filter system requires a back pressure

Technical data

Material housing:	Steel, polyester coated
Material filter:	Stainless steel
In-/outlet:	2" /3" /4" /6" /8" / 10" /12" /14"
Flow rate:	up to 700 m ³ /h
Gasket:	NBR
Micron rating:	10 /20 /34 /50 /63 /75 /100 /125 /200 /300 /500 /800 /1000 µm
Working temperature:	50°C, higher temp. on demand
Working pressure:	2-10 bar
Electrical power:	400 V
Control voltage:	24 V (intern)
Motor:	0,37 kW, 50 Hz
Cleaning valve:	2"



Type	Connection	Dimension									Usable surface (cm ²)	Water consumption per cleaning (l)	weight (kg)
		A	B	C	DN	E	F	G	H	J			
FMA 2003-S	3"	302	360	218	80	881	400	1625	457	325	2.200	35	261
FMA 2004-S	4"	314	770	220	100	1305	690	2140	457	325	4.390	70	304
FMA 2006-S	6"	340	1000	240	150	1580	970	2415	457	325	6.900	105	382
FMA 2008-S	8"	367	1100	388	200	1855	1240	2690	457	325	9.400	140	439
FMA 2010-S	10"	419	1370	341	250	2130	1520	2965	457	325	11.900	175	495
FMA 2012-S	12"	430	1100	325	300	1855	1240	2690	660	450	14.700	175	675
FMA 2014-S	14"	433	1370	327	350	2130	1520	2965	660	450	19.150	175	753